



# CLZ 2014 ANNUAL OPERATIONS REPORT



Annual General Meeting, 22 April 2015

[ian@conservationlowerzambezi.org](mailto:ian@conservationlowerzambezi.org); [eleanor@conservationlowerzambezi.org](mailto:eleanor@conservationlowerzambezi.org)

[www.conservationlowerzambezi.org](http://www.conservationlowerzambezi.org); [www.facebook.com/clzafrica](https://www.facebook.com/clzafrica)

# CLZ 2014 ANNUAL OPERATIONS REPORT

ANNUAL GENERAL MEETING, 22 APRIL 2015

<b>CLZ BACKGROUND AND GOALS .....</b>	<b>3</b>
<b>CLZ WILDLIFE PROTECTION .....</b>	<b>0</b>
Support to ZAWA Law Enforcement Patrols .....	0
Village Scout Unit .....	8
Advanced Tactical Training .....	8
CLZ Support ZAWA with boots and overalls .....	8
Gorongosa National Park Partnership.....	8
SMART (Spatial Monitoring and Reporting Tool).....	9
New Operations Base at Kulefu .....	9
ZAWA Patrol Team Incentives.....	9
Aerial Support .....	9
Private Pilots Licence Training in South Africa for Rabson Tembo .....	13
Injured and snared animal assistance .....	13
Summary of main achievement in 2014 related to Wildlife Protection.....	15
<b>CLZ ENVIRONMENTAL EDUCATION .....</b>	<b>16</b>
CLZ EEP Activities.....	16
CLZ EEP Centre Developments in 2014   Two.....	16
Main Achievements related to Environmental Education Programme in 2014:.....	18
2015 EEP Plans .....	18
<b>CLZ COMMUNITY SUPPORT PROGRAMME.....</b>	<b>19</b>
Elephant Safe Storage Granaries – Felumbus.....	19
Human-Wildlife Conflict Village Scout patrols in Chiawa GMA .....	20
Rubatano (Unity) – Community Day Event, July .....	20
Chilli Workshop.....	21
Community Support Programme Impact Assessment .....	21
Achievements Related to Community Support Programme in 2014:.....	22
2015 Plans   FOUR.....	22
<b>BASE CAMP AND ADMINISTRATION .....</b>	<b>22</b>
Summary of main achievement in 2014 related to Base Camp and Administration .....	24
CLZ Board and Donors.....	25
CLZ Management Team:.....	25
2014 Major Donors (In alphabetical order) .....	25

## CLZ BACKGROUND AND GOALS

In the 1994, concerned local safari operators and other stakeholders recognised a need for organised support for the National Parks and Wildlife Service (NPWS now Zambia Wildlife Authority - ZAWA) in the Lower Zambia area. Registered as a non-governmental organization under the Zambian Societies Act in 1995, Conservation Lower Zambezi (CLZ) began to assist the NPWS and the Chiawa community with their conservation and wildlife protection efforts. Since its humble beginning providing essential support to NPWS and ZAWA, CLZ has grown and increased its activities and effort in the Lower Zambezi area. Not only has it increased its supported to ZAWA but CLZ has expanded to now include components of Environmental Education, Village Scout program, Community Development, Safari Guides Training and Examining, research and assisting injured, snared or orphaned wildlife.

Conservation Lower Zambezi is a Zambian non-governmental organisation committed to the conservation and sustainable use of the wildlife and environment of the Lower Zambezi for the present and future generations of Zambia.

CLZ has been in existence for 20 years and is governed by a voluntary board, which is democratically elected at an Annual General Meeting under the constitution and made up of members from Lower Zambezi, Zambia and South Africa. Some are stakeholders in the Lower Zambezi region and some are independent supporters.

CLZ rely entirely on donations from individuals and institutions, 100% of which are used directly for conservation activities. Our main, core support comes from safari operators in the Lower Zambezi who, as platinum members contribute USD \$12,000 per year:

- Anabezi Camp
- Baines River Camp
- Chiawa Camp
- Chongwe River Camp
- Mwambashi River Lodge
- Sausage Tree Camp
- Royal Zambezi Lodge
- Old Mondoro Bush Camp

Gold Members contribute USD \$7,200 per year:

- Chongwe River House
- Kasaka River Lodge

Silver Members contribute USD \$3,600:

- Kanyemba Lodge
- Mvuu Lodge
- River Grand (PMTP)

## CLZ WILDLIFE PROTECTION

According to the most recent, reliable<sup>1</sup> survey of the LZNP and Chiawa GMA the total elephant population was estimated at 2200<sup>2</sup>. However the LZNP and GMAs are also part of the larger Lower Zambezi system. This system is home to one of the largest African Elephant populations in the world, stretching across Mozambique, Zambia and Zimbabwe, with an estimated 23,211 elephants<sup>3</sup> roaming across international boundaries. Since 1995 when CLZ started to support ZAWA's Lower Zambezi Area Management Unit (LZAMU), the elephant population in the LZNP and GMA has increased.

Due to the rising global demand for ivory, there was a marked increase in poaching incidents<sup>4</sup> across the continent and Zambia and where many protected areas have been unable to provide sufficient anti-poaching resources to effectively protect the area. In 2013 and 2014 CLZ significantly increased our support to ZAWA through the Village Scout Unit that has enabled more patrol teams and a greater wildlife protection presence in the Park and Chiawa GMA which resulted in the lowest number of poached elephants in the LZNP recorded in CLZ's 19 years of operation in 2013 however there was a dramatic increase again in 2014. With the increased patrol coverage, the plane flying and the support of Safari Guides we are believe that the majority of poached elephant carcasses. This belief is also supported by the number of fresh or recent carcasses reported relative to the low number of old or very old carcasses reported (according to MIKE standards are classifying the age of a carcass).

CLZ's main wildlife protection aims are to:

- support Zambia Wildlife Authority (ZAWA)'s efforts to reduce the illegal killing of elephants and other wildlife in the LZNP and GMAs;
- assist in improving identification of the extent and cause (monitoring) of illegal killing; measure and record levels and changes in trends of illegal killing of elephants and other wildlife in the Lower Zambezi; and
- support ZAWA with the rehabilitation of injured and snared wildlife in the Lower Zambezi.

In 2014, CLZ aimed to achieve these objectives through the following activities:

- Supporting a minimum of 16 ZAWA & VS anti-snaring and anti-poaching patrol teams in the LZNP and GMAs per month to deter and prevent illegal activity;
- Providing GPS equipment and training for ZAWA wildlife police officers and Village Scouts in order to better monitor and analyse patrol effort and effectiveness and to collect accurate and detailed information on illegal activities and levels each month;
- Conducting 12 hours of aerial patrols per month in CLZ's Cessna 172 plane;
- Providing transport and veterinary supplies and assistance to ZAWA for immobilising, de-snaring and treating injured animals.

## Support to ZAWA Law Enforcement Patrols

ZAWA Anti-poaching patrol team support from CLZ:

- A minimum of 16 anti-poaching patrols supported per month, each five man, 10 day patrol team receiving;
- Food rations, water drums if necessary and First Aid kits;

---

<sup>1</sup> P. Viljoen Lower Zambezi Aerial wildlife Survey: October 2013

<sup>2</sup> P. Viljoen Lower Zambezi Aerial wildlife Survey: October 2013

<sup>3</sup> K. M. Dunham Aerial Survey of Elephants and Other Large Herbivores in the Zambezi Heartland - Zimbabwe, Mozambique and Zambia 2003

[ian@conservationlowerzambezi.org](mailto:ian@conservationlowerzambezi.org); [eleanor@conservationlowerzambezi.org](mailto:eleanor@conservationlowerzambezi.org)

[www.conservationlowerzambezi.org](http://www.conservationlowerzambezi.org); [www.facebook.com/clzafrica](https://www.facebook.com/clzafrica)

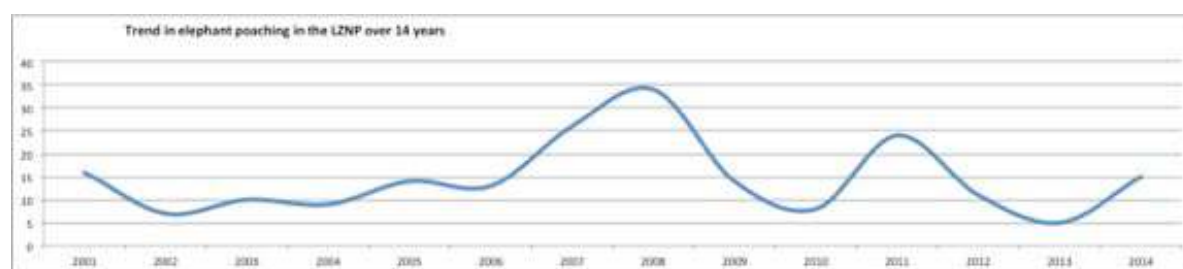
- Deployment transport (vehicles, boats and plane);
- VHF Radios and batteries and 24/7 communications with CLZ's control room;
- GPS devices for monitoring and data collection;
- Brief before patrol and de-brief at end of patrol
- Support from CLZ aerial patrols;
- Emergency rapid response assistance;
- Geographical coverage of patrols will be recorded and managed by CLZ with GPS data downloaded onto a GIS and analysed. Locations of illegal activities plotted onto GIS to better manage the effectiveness of patrols.
- Detailed reports of poaching and anti-poaching activities and results will be maintained and analysed.

All elephant carcasses reported are verified in the field by patrol teams or CLZ. For each carcass reported standardized data is collected i.e. date carcass reported, how the carcass was first discovered and who visited it, geo-referenced location using a global positioning system (GPS) unit, cause of death (if verifiable). The cause of death is determined using evidence acquired at the carcass, such as presence of injuries or eyewitness accounts. Cause of death is categorized into either: illegally killed, problem animal control (PAC), natural or unknown. The presence or absence of tusks is recorded for each carcass noting whether tusks are naturally absent or whether they were removed after the elephant died. Carcasses with tusks missing are not automatically categorized as illegally killed unless there is circumstantial evidence e.g. bullet holes, ivory is cut out or observer reports of gunshots. CLZ's metal detector (Ebinger 410) is used for ballistics analysis in the field on poached carcasses and carcasses where the cause of death is unknown. Using this information CLZ can calculate PIKE (Proportion of Illegally Killed Elephants) and assist ZAWA with monitoring and evaluating wildlife crime in the Lower Zambezi area. CLZ maintains a detailed elephant mortality data collection system, which conforms with IUCN, MIKE and TRAFFIC standards (see example below).

For several years CLZ's support to ZAWA was limited and the CLZ plane was not active. During this time (2009-2011) results have shown many poached elephant carcasses were not found, reported or recorded. From 2012 to 2014 a total of 63 poached elephants were identified, which were estimated to have been poached between 2009 and 2011 and had not been reported or recorded. See image below. Therefore the level of poaching over this time was probably much higher than the results below reflect.

#### *Poached elephants in the LZNP over the last 14 years*

Year	2001	2002	2003	2004	2005	2006	2007	2008	2009	2010	2011	2012	2013	2014
Lower Zambezi NP	16	7	10	9	14	13	26	34	14	8	24	11	5	15
Chiawa GMA												5	5	6

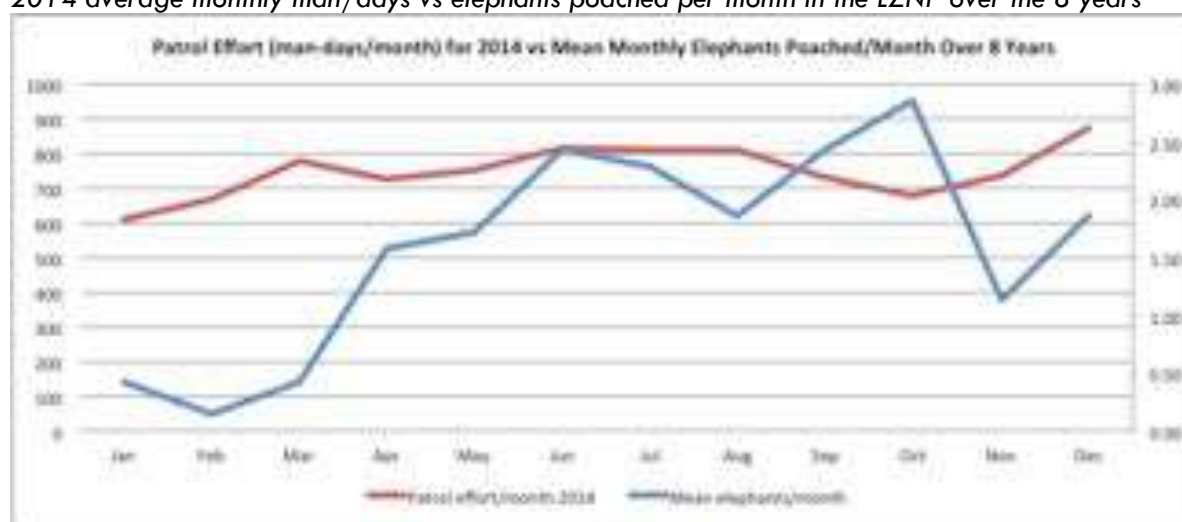




Average elephants poached per month in the LZNP over the 8 years

Year	Jan	Feb	Mar	Apr	May	Jun	Jul	Aug	Sep	Oct	Nov	Dec	Total
2007	2	0	3	1	0	3	5	6	3	2	0	1	26
2008	1	1	0	6	2	2	6	2	3	3	1	7	34
2009	0	0	0	4	2	0	0	1	3	2	0	2	14
2010	0	0	0	0	0	3	1	0	3	0	0	1	8
2011	0	0	0	0	7	3	3	2	0	3	4	2	24
2012	0	0	0	0	1	1	1	1	5	1	1	0	11
2013	0	0	0	0	0	1	0	0	0	2	2	0	5
2014	0	0	0	0	0	4	0	1	0	7	0	3	15
Average per month	0.38	0.13	0.38	1.38	1.50	2.13	2.00	1.63	2.13	2.50	1.00	2.00	17.13

2014 average monthly man/days vs elephants poached per month in the LZNP over the 8 years



Example of Elephant Mortality Data Sheet

Elephants Encountered Poached Park 2013											
No	Date	Age of carcass	Age of elephant	Originally reported by	Verified by the field	Cause of death	Sex	Teeth	Area	Coordinates	Comments
1	06-Aug-13	W	Adult	Lost track led by Mwanza Wildlife	See Mwanza Wildlife for April report	W	M	1	North of One of Action Point at the base of the escarpment	0 17 36.534 34 29 36.058	The meat had been taken and the tail and ivory missing and had been cut off. The carcass is estimated to be under 1 month old.
2	23-Oct-13	W	Adult	Seen from led by Mwanza Wildlife	See Mwanza Wildlife for April report	W	F	5	South-west of Mwanza Wildlife	0 15 36.500 34 29 36.058	The meat and ivory were all taken and a large drying rack was seen in the carcass. It seems that the carcass was found dead at the site and exposed as it was found. It was estimated to be under 1 month old by the poachers. The carcass is believed to have been poached in September.
3	30-Nov-13	W	Adult	Seen from led by Mwanza Wildlife	See Mwanza Wildlife for April report	W	F	5	South of Hippo City	0 15 37.000 34 29 36.058	The meat and ivory were all taken and the carcass is expected to have been poached by the same group of poachers as the carcass seen in the above report in September.
4	10-Dec-13	F	Adult	Yakuba found from the led by Mwanza Wildlife and Mwanza Wildlife	Seen from led by Mwanza Wildlife	W	M	5	Behind Mwanza Wildlife	0 15 36.534 34 29 36.058	Yakuba and drying racks found by Mwanza Wildlife and Mwanza Wildlife. The carcass was found on 10/12/13. Mwanza Wildlife led by Mwanza Wildlife followed up and found the carcass. The big bull and one medium size bull and one small bull. The big bull was a male with medium ivory 5 to 10 kg. Poachers thought to be using a 1.75 m stick and a rope of 10 to 15 poachers to carry meat. Carcass was in two parts old.
5	14-Dec-13	F	Adult	Yakuba found from the led by Mwanza Wildlife and Mwanza Wildlife	Seen from led by Mwanza Wildlife	W	M	5	Behind Mwanza Wildlife	0 15 36.534 34 29 36.058	Yakuba and drying racks found by Mwanza Wildlife and Mwanza Wildlife. The carcass was found on 14/12/13. Mwanza Wildlife led by Mwanza Wildlife followed up and found the carcass. The big bull and one medium size bull and one small bull. The big bull was a male with medium ivory 5 to 10 kg. Poachers thought to be using a 1.75 m stick and a rope of 10 to 15 poachers to carry meat. Carcass was in two parts old.

Notes: 1. Age of carcass is indicated as 4 categories: 1. Fresh (1-3 days old), 2. Recent (4-7 days old), 3. Old (8-14 days old), 4. Very Old (15 days or more). 2. Cause of death is indicated as 4 categories: 1. (Slightly) killed (W), 2. (Slightly) killed (W), 3. (Slightly) killed (W), 4. (Slightly) killed (W). 3. Sex is indicated as 4 categories: 1. Male (M), 2. Female (F), 3. Unknown (U), 4. Unknown (U). 4. Teeth are indicated as 4 categories: 1. No teeth (N), 2. Small (S), 3. Medium (M), 4. Large (L). 5. Area is indicated as 4 categories: 1. Behind Mwanza Wildlife, 2. Behind Mwanza Wildlife, 3. Behind Mwanza Wildlife, 4. Behind Mwanza Wildlife.

*Stats on discoveries of elephant carcasses for 2014*

Carcasses Found By	Poached Park	Poached GMA	Percentage of poached carcasses found	Natural / Unknown Park	Natural / Unknown GMA	Total	Percentage of carcasses found
Zawa/Patrol	6	1	33%	3	2	12	27%
Guides/Operator		3	14%	13	1	17	38%
CLZ Staff			0%			0	0%
Plane	8	1	43%	2		11	24%
Community		1	5%		2	3	7%
Kayila Scouts			0%		1	1	2%
Others	1		5%			1	2%
							0%
<b>Total</b>	<b>15</b>	<b>6</b>	<b>100%</b>	<b>18</b>	<b>6</b>	<b>45</b>	<b>100%</b>

*Recoveries and Illegal Activity for 2014*

Month	Special OPS	Suspects	Firearms	Poached elephants	Natural death	Ivory	Ammunition	Snares	Drying! Racks	Poachers! Camp
Jan	0	0	0	0	2	0	0	6	3	1
Feb	0	0	0	2	0	0	0	0	1	0
Mar	0	0	0	0	2	0	0	0	2	3
Apr	0	0	0	0	1	0	0	34	0	0
May	0	0	0	2	4	0	0	11	6	2
Jun	0	0	0	4	4	0	0	7	2	1
Jul	2	3	1	0	4	0	0	12	3	2
Aug	2	2	2	2	0	0	0	0	6	0
Sept	1	5	0	0	6	0	0	23	3	2
Oct	0	0	0	7	7	0	23	5	6	3
Nov	0	0	0	1	3	0	0	34	2	0
Dec	0	3	2	2	1	6	0	17	5	8
<b>Total</b>	<b>5</b>	<b>13</b>	<b>5</b>	<b>20</b>	<b>31</b>	<b>6</b>	<b>23</b>	<b>118</b>	<b>39</b>	<b>22</b>

2014 Elephant Carcasses Western LZNP (Red poached and Blue natural or unknown)

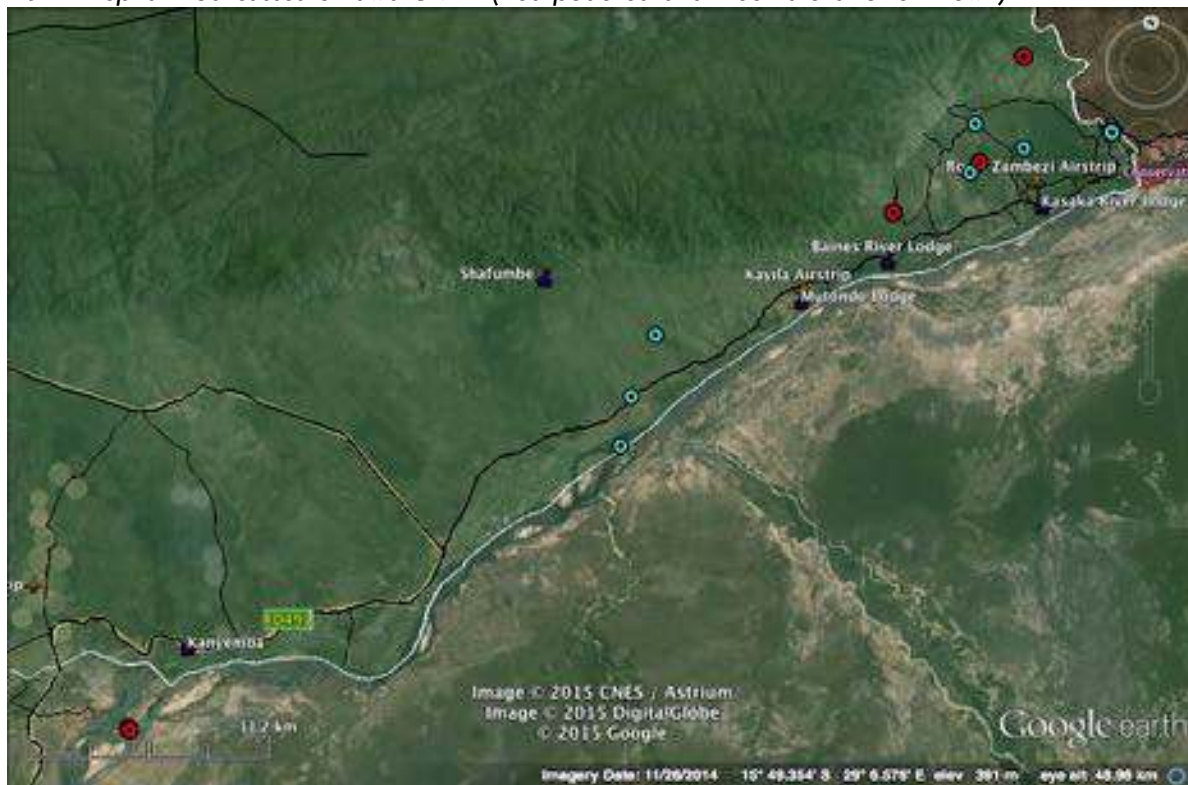


2014 Elephant Carcasses Eastern LZNP (Red poached and Blue natural or unknown)

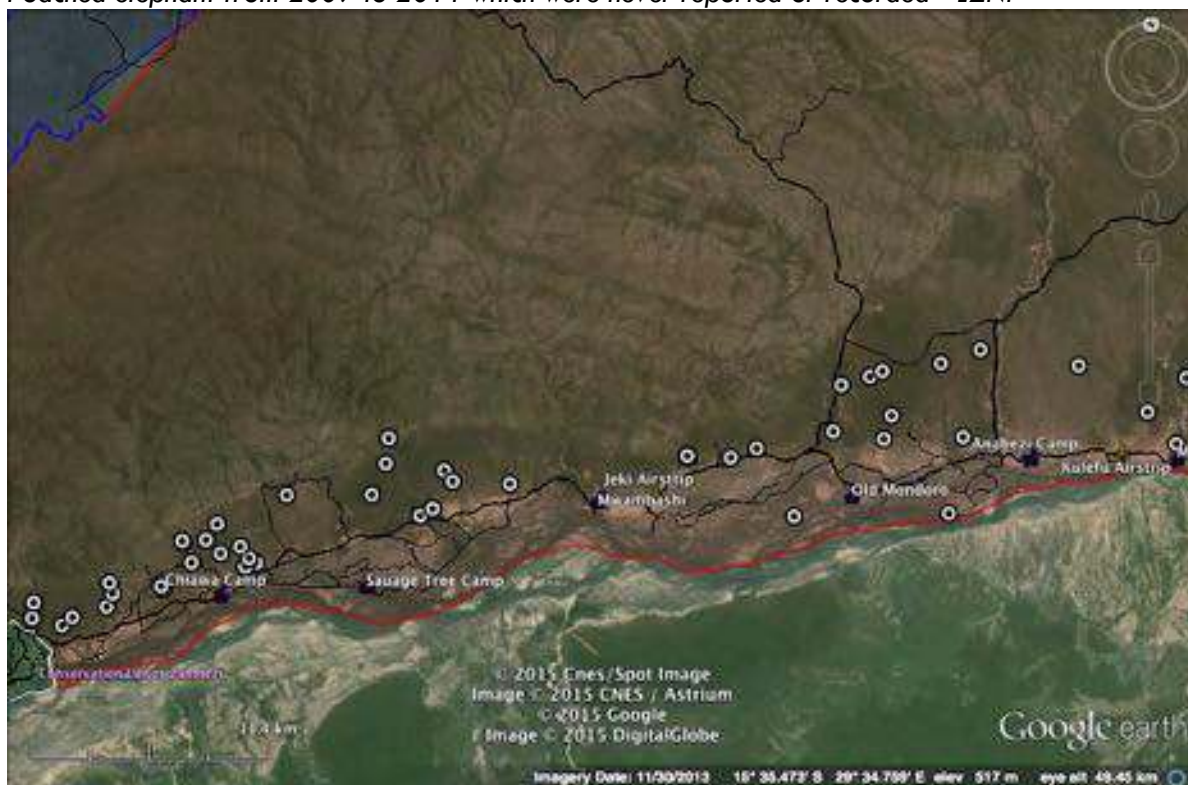




2014 Elephant Carcasses Chiawa GMA (Red poached and Blue natural or unknown)



Poached elephant from 2009 to 2011 which were never reported or recorded - LZNP



In 2014, a total of 9,005 (up from 8,376 in 2013) ZAWA and Village Scout wildlife protection patrol man-days were supported by CLZ (through 5 man, 10 day patrols or otherwise e.g. 4 man, 15 day patrols etc). This saw an average of 16.3 (increased from 13.2 in 2012 and 15.7 in 2013) x 10-day long patrols per month. This is the highest man-days and coverage the park has ever recorded.

*Stats on 2014 man-days and 10-day long patrols*

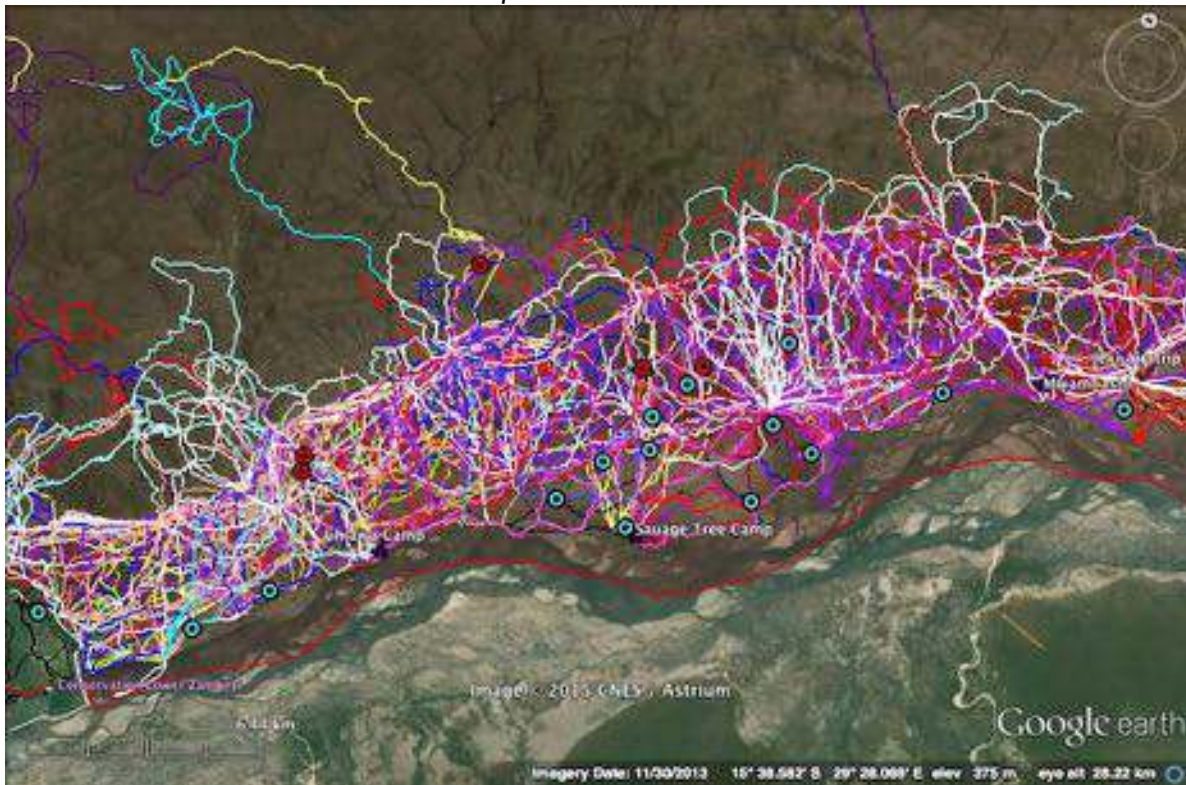
Month	Total Man-days	Total Long Patrols	VS Man-days	VS Long Patrols	ZAWA Man-Days	ZAWA Long Patrols	VS %	ZAWA %
Jan	610	14.3	70	1.8	540	12.4	11%	89%
Feb	669	15.3	231	5.0	438	10.4	35%	65%
Mar	782	16.6	271	5.7	511	11.0	35%	65%
Apr	727	15.2	302	6.3	425	8.9	42%	58%
May	752	16.1	302	6.6	450	9.4	40%	60%
Jun	816	18.3	436	9.9	380	8.4	53%	47%
Jul	810	18.0	448	10.1	362	7.8	55%	45%
Aug	810	16.2	433	6.6	377	11.0	53%	47%
Sep	733	16.7	466	6.9	267	10.0	64%	36%
Oct	680	15.6	385	9.3	295	6.1	57%	43%
Nov	737	18.9	374	13.2	363	6.9	51%	49%
Dec	879	15	536	8.8	301	5.4	61%	34%
<b>Total</b>	<b>9005</b>	<b>196.0</b>	<b>4254</b>	<b>90.2</b>	<b>4709</b>	<b>107.6</b>		
<b>Ave/Mth</b>	<b>750.4</b>	<b>16.3</b>	<b>354.5</b>	<b>7.5</b>	<b>392.4</b>	<b>9.0</b>	<b>47%</b>	<b>53%</b>

*Stats on 2014 man-days/month*

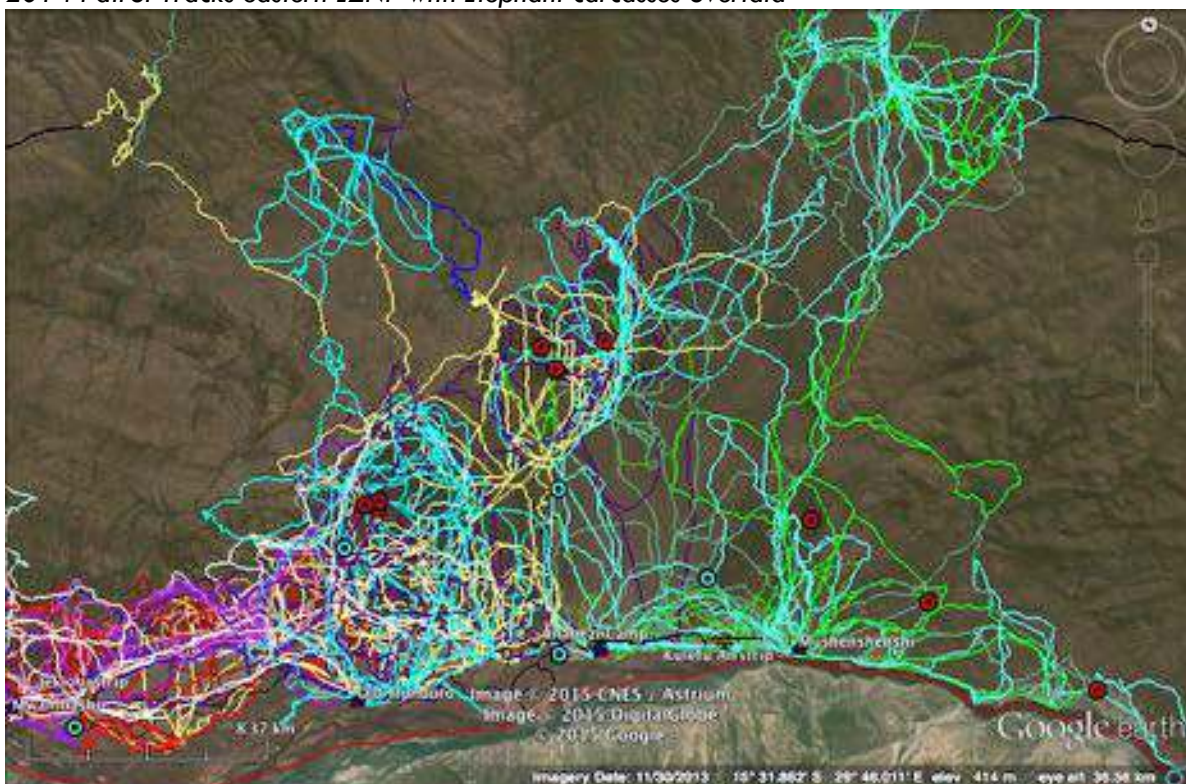




2014 Patrol Tracks western LZNP with Elephant carcasses overlaid



2014 Patrol Tracks eastern LZNP with Elephant carcasses overlaid



### Village Scout Unit

Through an MoU with the 4 four surrounding CRB's and ZAWA, CLZ continue to support 20 scouts in our Village Scout Unit. CLZ pay their salaries, provide training, uniforms, field equipment and all costs involved in their deployment in the field. These 20 Village Scouts account for almost 50% of the patrol effort in the LZNP and Chiawa GMA.

The Village Scout Unit was not been without its challenges. In early 2014 CLZ refused to pay, 4 of the village scouts due to their involvement in a poached buffalo incident in the park. Another VS became mentally unstable and was released from employment whilst another officer was arrested and accused of a crime while in possession of a firearm and was dismissed. The above officers were all replaced and there again 20 VS support by CLZ at the end of 2014.

### Advanced Tactical Training

With funding from US Fish and Wildlife Service (USFWS), CLZ partnered with ZAWA and Conservation Outcomes to conduct a two-week Advanced Tactical Training course in January 2014. The continued training of the Villages Scouts helps to maintain discipline, morale and the skills required to preform their duties safely and effectively in the field. 20 Village Scouts completed the course.

Village Scouts trained in how to conduct road blocks



### CLZ Support ZAWA with boots and overalls

In 2014, ZAWA managed to secure additional personnel however did not have the resources to equipment them with basic field equipment and uniforms and therefore they could not conduct patrols and be on active duty. As the lack of man-power remains a major constraint to the protection of the LZ, CLZ agreed to support ZAWA and supply boots, uniforms and basic field requirements for the 5 new officer thus allowing them to go on patrol.

### Improved Communications

At the end of 2014 CLZ submitted a grant application to US Fish and Wildlife Service for funding to install a new digital VHF radio/repeater system. The funding would cover the installation of a new repeater back on top of Mt Chilapila and the replacement of all base, mobile and handset radio units for CLZ and ZAWA. All radios would be GPS enabled and a control/monitoring room would be set up at CLZ allowing for real time information on the radio's position and we can better monitor and protect the patrol teams and mobiles. The digital system is also has the ability to communicate privately between individual radios, which will improve security and reduce information leakage. We still await approval of the grant application.

### Gorongosa National Park Partnership

CLZ is investigating a potential partnership with Gorongosa National Park and the Greg Carr Foundation. Following on from a meeting with Greg Carr, CLZ's CEO, Operations Manager and Senior Park Warden travelled to Gorongosa National Park in Aug 2014 to assess their law enforcement efforts and strategy and to offer advice. In return CLZ was financially rewarded for the trip. CLZ is currently in the process of developing an agreement with Gorongosa where CLZ will be financially rewarded to act in an advisory role on the law enforcement component of their project.



## SMART (Spatial Monitoring and Reporting Tool)

In mid 2014 CLZ's CEO attended an introduction session to SMART in Zimbabwe. SMART is a new tool that has been developed to better monitor and manage law enforcement effort in protected areas across Africa, South America and Asia. CLZ partnered with ZAWA and Panthera and conducted a 3 days intensive course the use of SMART in December 2014. CLZ has also managed to source funding for 10 Trimble devices. Trimble devices are touch screen devices with a built in GPS which patrols will carry to record their patrol tracks, patrol type and members and all observation made whilst on patrols. The data collected will be downloaded and managed by CLZ's operational staff and all data will be sent to ZAWA in Chilanga.

## New Operations Base at Kulefu

The eastern end of the LZNP has always been a logistical challenge for CLZ and ZAWA. The areas remoteness and lack of roads makes it difficult and costly to respond to illegal activity. In 2013 the need for an operations base in the area was identified and supported by ZAWA. Thanks to the generous support of Charles Davies (Anabezi Camp) in 2014 construction commenced however was delayed due to resources and the rains. The new base is planned to be completed in 2015. Once established it will be manned by one CLZ and one ZAWA personnel and a vehicle and boat will be permanently based there. The new base will be situated next to the Kulefu airport allowing for air, river and road access. The new base will decrease costs and increase response times to illegal activities and should improve the protection of the area.

## ZAWA Patrol Team Incentives

The incentives CLZ introduced in 2012 for successful field patrols continued. These incentives assist to motivate scouts and improve moral.

## Aerial Support

9J CLZ carrying out aerial monitoring over the LZNP



A vital tool in anti-poaching and wildlife monitoring, CLZ's Cessna 172 is used for aerial patrols over the LZNP and GMAs. Flown by CEO, Ian Stevenson with the assistance of ZAWA and CLZ spotters, the "eyes in the skies" help to deter and prevent illegal activity in the area and help provide vital information and rapid support to anti-poaching foot patrols when illegal activity is reported. The plane also assists patrol teams with air-drops of items such as medicine, ammunition, food and radio and GPS batteries and has been used to lift sick or injured scouts out of the field. It was calculated in 2015 that the plane was responsible for spotting 43% of the poached elephants in the LZNP, which highlights the vital role it plays.

In late 2014, CLZ were requested by ZAWA, Game Rangers International and The Nature Conservancy to provide technical support, through use of plane, pilot and aerial spotter for three aerial surveillance missions to better understand wildlife population densities and distributions, identify and observe illegal activity evidence and as a result plan more effective law enforcement strategies. The long-term goal of this activity was to demonstrate the utility and effectiveness of aerial support to collect data for ZAWA that will facilitate

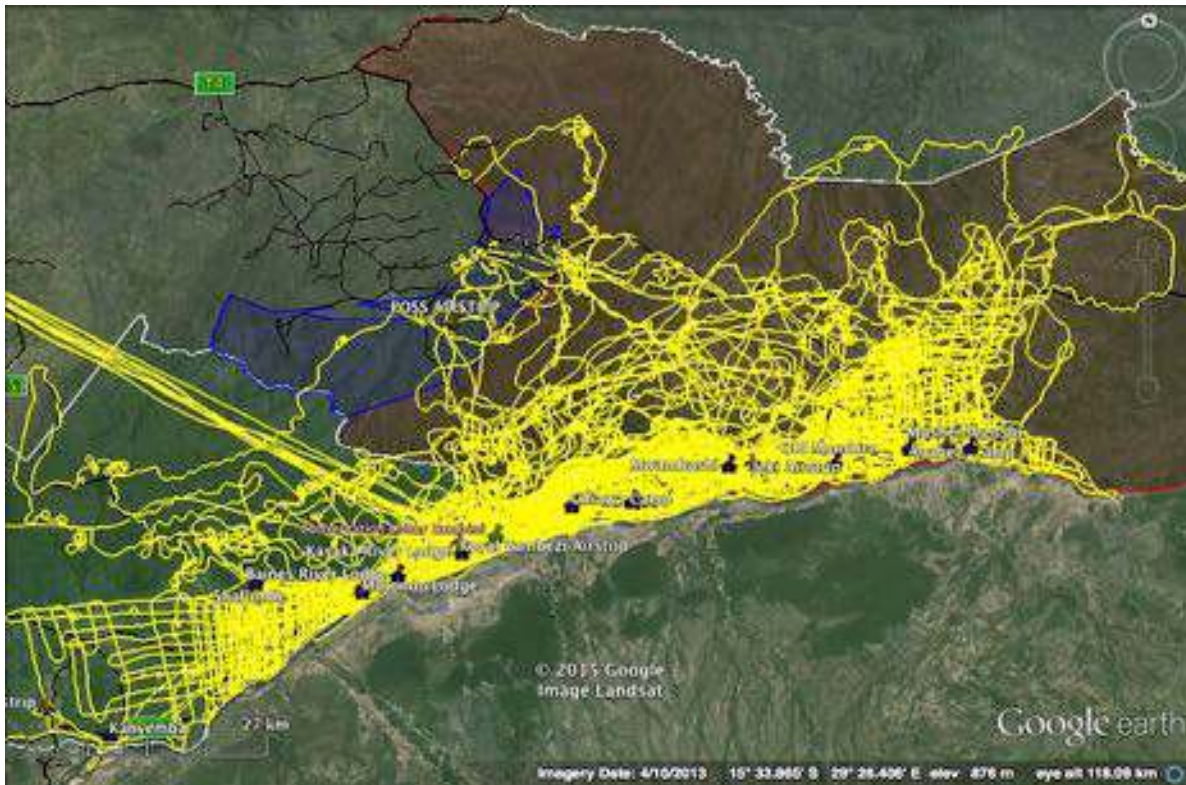
effective management of the wildlife resources in KNP. Ian Stevenson and Peter Tembo, highly experienced spotter and Assistant Operations Manager, undertook three trips to carry out patrols and train ZAWA officers and GRI staff on techniques for spotting wildlife and illegal activity, and any activity found was followed up by teams on the ground, notified via air-to ground radio communication. These aerial reconnaissance missions were funded by The Nature Conservancy who donated Avgas for the plane totaling \$14,503, which will provide enough Avgas for almost 190 hours' flight in the Lower Zambezi.

A generous private donor leases the plane at no cost to CLZ. In 2014 "9J CLZ" flew a total of 185.0 hours, of which 42.7 hours were dedicated to the KNP patrols. On average this equates to 15.4 hrs/month and without the KNP assistance to 11.9 hrs/month dedicated to the Lower Zambezi.

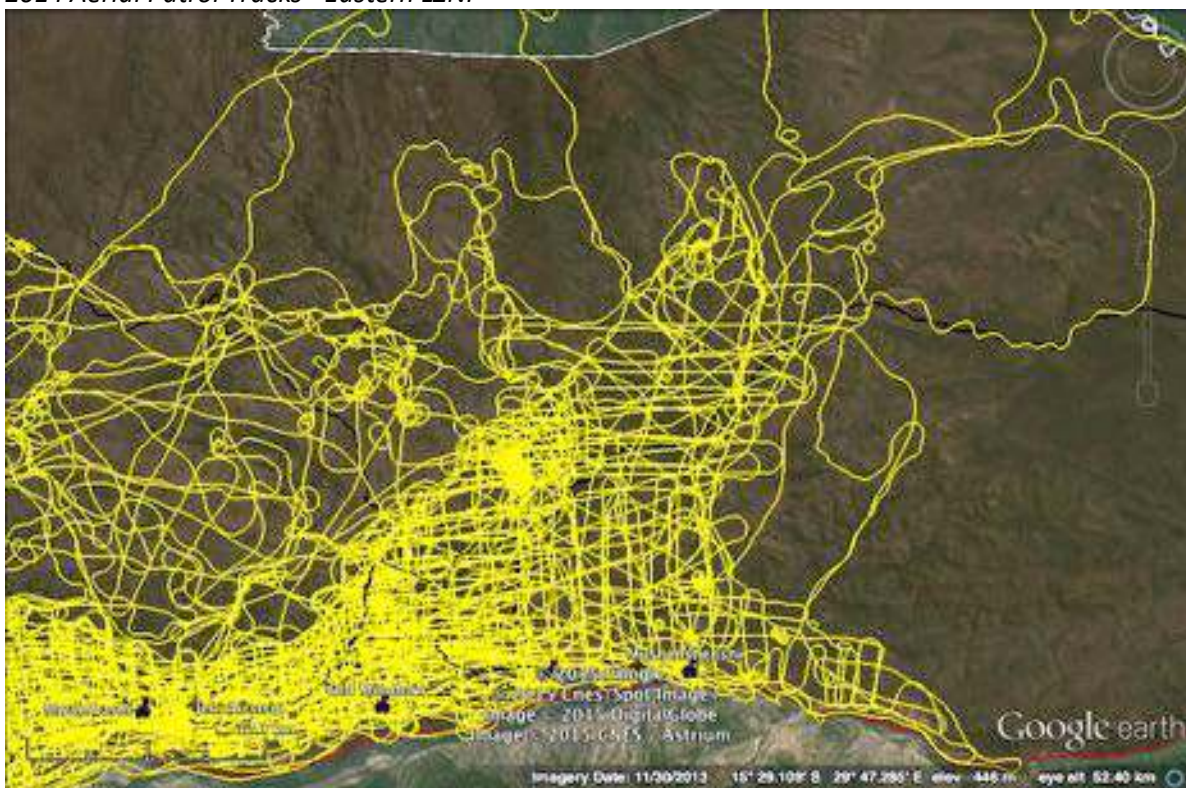
*Monthly hours for CLZ's C 172 wildlife monitoring plane*

2014	Jan	Feb	Mar	Apr	May	Jun	Jul	Aug	Sep	Oct	Nov	Dec	Total
Hours/Month	15.5	4.4	14.3	12.1	16.0	12.6	18.8	0.0	25.4	32.9	28.7	4.3	185.0 (42.7 in KNP)

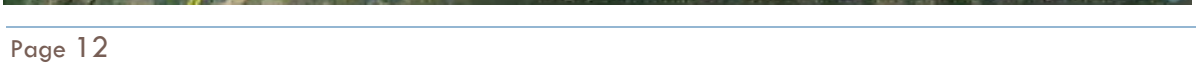
2014 Aerial Patrol Tracks – LZNP and Chiawa & Rufunsa GMAs



## 2014 Aerial Patrol Tracks - Eastern LZNP

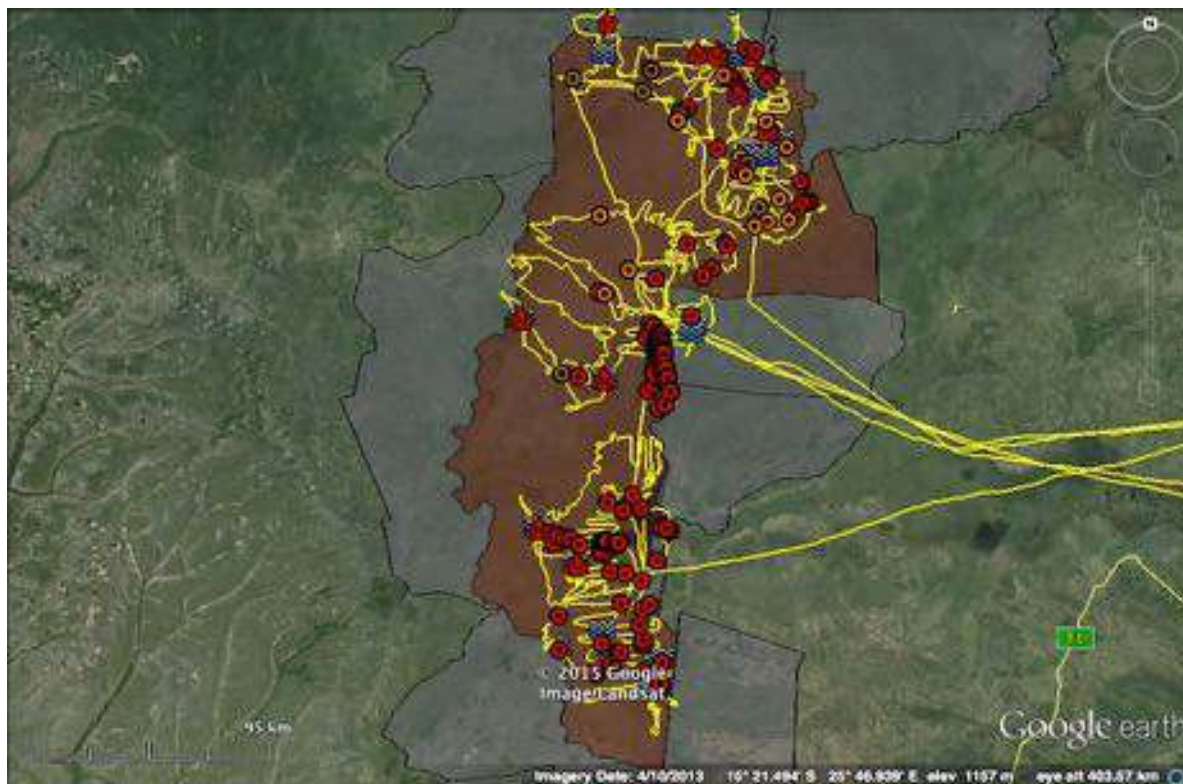








### 2014 Aerial Patrol Tracks – KNP Support



### Private Pilots Licence Training in South Africa for Rabson Tembo

Thanks to pledged funding from Tusk Trust and African Management Services Company (AMSCO), Rabson Tembo (CLZ's Operation Manager) will be sponsored to go to South African to undertake his PPL in 2015. Rabson's PPL training is expected to take 6 to 8 weeks after which he would have to do his conversion onto a Zambian licence in hope to eventually assist CLZ and ZAWA with aerial support in the Lower Zambezi.

### Injured and snared animal assistance

Although the number of snares recovered in the field and the number of animals reported with snares appears to be on the decrease, snaring remains a very real threat. There were several snared animals reported which were mainly in the Chiawa GMA. See list below. Patrol teams are instrumental in locating and disposing of snares as well as reporting any animals that have become trapped in a snare. Increased anti-snaring patrol efforts were made, particularly in the eastern Chiawa GMA along the river where many snares have been historically found. On several occasions in 2014 CLZ offered assistance to ZAWA in their efforts to sedate and treat animals injured by snares. In 2014 no snares were removed from any animals.

Over the last 3 years CLZ has been corresponding and meeting with ZAWA and the Zambian Veterinarian Council to find a solution for qualified personnel to be permitted again to respond to and immobilise snared wildlife under the supervision of a vet. In 2014 CLZ intended to co-employ a vet with Game Rangers International (GRI) but due to GRI funding this was delayed. We have budgeted for and hope in 2015 this program can be implemented. The vet will supervise CLZ's injured and snared wildlife efforts and we are

informed they will also be allowed to apply for permission for qualified non-vets to be permitted to dart snared wildlife in their absence but under their remote supervision.

Snared animals reported in the Lower Zambezi in 2014							
No	Date	Species	Where snared	Reported by	Location	Response	Removed
1	17/02/2014	Elephant sub-adult male	Right Rear Leg	Ian Stevenson	Nyamungwe Area		No
2	11/04/2014	Elephant adult female	Right Front leg	Nyamungwe	Nyamungwe Area		No
3	09/06/2014	Male Lion	Neck	Stephen Kalio	Mugurameno Area		No
4	06/07/2014	Male Hyena	Neck		Bad Angle - LZNP	Dr Parson looked	No
5	07/10/2014	Elephant	Rear leg	O'brian/UNZA	Munyumeshi	ZAWA	No
6	12/11/2014	Hippo	unknown	Bayabaya farm	Bayabaya farm	Freed its self	No



*Ingrown snare on elephant*



*Bad snare wound on young elephant*

### Rescue and relocation

A young habituated vervet monkey was reported at Chirundu boarder post which ZAWA responded to, captured and requested CLZ assist with. The vervet was christened Paddy due to his attracted to beer. Paddy was with CLZ for approximately 4 months before being moved to Munda Wonga under the care of the Zambian Primate Project where he is now reported to be doing well and is being prepared for release back into the wild.

*Paddy*



**Summary of main achievement in 2014 related to Wildlife Protection**

- The level of elephant poaching sharply increased in 2014
- 9005 patrol man-days (average of 698/month) and 15.7 10-day long patrol/month
- The LZNP and Chiawa GMA saw the highest patrol coverage ever recorded
- The continuation of the Village Scout Unit (20 Officers)
- Conducted an Advanced Tactical Training course for 20 Village Scouts
- CLZ continue develop the LZ GIS and Database
- Secured funding to send Rabson Tembo to South Africa for his PPL
- The wildlife monitoring plane flew a total of 185 hours in 2014
- Rescued an orphaned young vervet and relocated it to Mund Wonga
- Assisted KNP with 3 aerial reconnaissance flights
- Attended and later conducted an introduction training course in SMART
- Commenced construction of a new Operations Outpost at Kulefu Airtrip
- Procured 10 Trimbles to implement SMART in the LZ Area Management Unit

**2015 Wildlife Protection Plans**

- Support law enforcement 20 patrols month
- Commence the implementation of Detection Dog Unit
- Secure funding for a mobile IIU and Rapid Response Unit
- Install a digital Radio repeater system
- Complete the construction, man, and equip the Operations Base at Kulefu
- Conduct 144 hrs of aerial support
- Implement SMART
- Procure patrol equipment for 100 field officers
- Build capacity in ZAWA and CLZ management
- Conduct refresher course in wildlife capture and immobilization

### CLZ ENVIRONMENTAL EDUCATION

The Environmental Education Project (EEP) was established in 2004 and the aim was to create awareness in target groups of local school children and the surrounding communities, about the importance and value of the wildlife and natural environment of the Lower Zambezi. Our CLZ EEP project area includes basic and primary schools in the following surrounding areas of the Lower Zambezi National Park:

- Chiawa: Western and Eastern Chiawa Game Management Area (GMA)
- Chongwe: Chongwe, North Chiawa GMA, Lusaka Province
- Chinyunyu: Chinyunyu , North – West Chiawa GMA and the Park, Lusaka Province
- Rufunsa: North-Eastern Rufunsa GMA and the Park, Lusaka Province
- Luangwa: Luangwa , Eastern Rufunsa GMA and the Park , Lusaka Province

### CLZ EEP Activities

Conservation Club Teachers' Curriculum supports the CLZ Enviro "K.I.T.S."

K – Knowledge - the wildlife and environment of the Lower Zambezi;

I – Importance of the natural resources of the Lower Zambezi;

T – Threats faced by the wildlife and natural environments of the Lower Zambezi;

S – Solutions – to find ways to protect the wildlife and environment of the Lower Zambezi.

The CLZ EEP objective is achieved through sharing the CLZ Enviro-KITS through the following activities:

- CLZ EEC Activity Centre Visits : 24 school children and 4 teachers spend 3 nights and 4 days learning about the basic geography, biology and ecology of their natural environment as well as how and why the natural environment of the Lower Zambezi needs to be protected. Children take part in lessons and activities including game drives and boat cruises in LZNP;
- CLZ Teacher Training: 24 teachers are invited for annual Teacher Training Workshop from a different project catchment area every year teaching them how they can include environmental education into their own school curriculum;
- CLZ EEP Outreach Program: carrying out conservation lesson and activities and encouraging environmental and HIV/AIDS awareness clubs that continue in CLZ's absence by using CLZ EEP conservation teacher's club curriculum.
- CLZ EEP Lesson plan and curriculum development

### CLZ EEP Centre Developments in 2014

Funding from **Sidecole, Elephant Charge, Kansanshi Foundation (First Quantum Minerals), Tony and Sally Squibb, Captain Planet Foundation, Woodward Academy and Expert Africa** has kindly been received this year and greatly contributed to the funding and success of CLZ's EEP for 2014.





In January 2014, Mr. Besa Kaoma attended the teacher - training workshop conducted by **BioCarbon Partners**, to mark the launch of BioCarbon Partners - Environmental Education Program for two schools in the Chinyunyu project area.

Besa also drafted the CLZ- HIV/AIDS and wellness workplace policy after conducting a questionnaire with CLZ staff, and other NGOs were consulted about what should be included in

the legal document. CLZ also hosted **Support HIV/AIDS Response in Zambia II (SHARE)** an NGO for a possible partnership in tourism work place HIV/AIDS policy with tour operators of the Lower Zambezi. They conducted 2 day in-situ training in sexually transmitted infections (STIS) and HIV/AIDS awareness workplace program at CLZ.

#### Pass Rates CLZEEP School Children Progress Table 2013 – 2014

Project Area	Chiawa GMA	Eastern	Chinyunyu	Chongwe	Chiawa Western GMA	Luangwa	Rufunsa
2013	100%		68%	58%	22.2%	72%	90%
2014	83.33%		80%	62.5%	33.33%	60%	84%



This year CLZ developed the Health and HIV/AIDS Education Curriculum. This curriculum, like the EEP curriculum, is also distributed to each project school during Besa Kaoma's outreach programs. The focus of the curriculum largely revolves around HIV/AIDS awareness .

All the schools from the five project areas who have visited CLZ this year were told to come up with a community or school project proposal to undertake and implement at school after the CLZ visit.

**Numbers of Pupils reached through EEP in 2014:**

	<b>Pupils</b>	<b>Teachers</b>	<b>No. Schools</b>
<b>Outreach</b>	2,179	N/A	47
<b>School Visit Programme</b>	147	19	29

This year CLZ conducted the Chiawa inter-schools conservation and health education quiz for the Chiawa catchment area. The 2014 Conservation Quiz included 50 participants, with 8 teachers from 8 schools. The quiz competition for this year was dynamic, stimulating and evoked interest and competition amongst the schools. The final for this year's quiz was won by Chitende School, with Kabwadu School the runners up.

**Main Achievements related to Environmental Education Programme in 2014:**

- In 2014 our outreach program disseminated the message of wildlife conservation and environmental awareness to 2,179 pupils from 47 schools;
- Hosted UNZA EE student for second year;
- Was the subject of research by MSc student Shaina Irwin,
- Printed and disseminated new EEP health education curriculum to 47 schools;

**2015 EEP Plans**

- Six school camp visits, five outreach school visits and teacher training workshop from different region project catchment area (Luangwa and Rufunsa area) for 2015.
- Design and print new EEP curriculum;
- Revise School Visit programme;
- Implementation of M& E programme across the project, thanks to EC funding
- Upgrade and redesign of EE centre;
- The Chiawa interschool conservation quiz will take place among the seven schools in Chiawa GMA.

## CLZ COMMUNITY SUPPORT PROGRAMME

CLZ understands that the local communities living around protected wildlife areas in Zambia face many challenges in sharing their homes with wildlife. Farmers struggle to grow and store crops with any certainty knowing that an elephant may destroy their harvest in one night. Women and children move around constantly aware that dangerous animals may block their paths. The support of the local communities for the protection of wildlife and environment is essential and CLZ is committed to helping these local residents live sustainably in harmony with their valuable natural resources.



Our activities are focused in the Chiawa GMA and the villages closest to the National Park who are affected most by the difficulties of living with dangerous game, with a total population of around 442.

**Awely Partnership**

Credit:

After a number of years of a technical support to CLZ's Human-Wildlife Conflict Programme, in June 2014 we were delighted to enter a formal partnership with [Awely](#), who secured funding for HWC 'Red Cap' Stephen Kalio's salary for the next two years and have secured funding of 10,000 EUR to run the project's workshops, cover running costs and new activities, including a pilot for new alternative crops and 30 new felumbus. Awely's Chief Executive Renaud Fulconis visited CLZ in June 2014 to meet Stephen and see the project area. We look forward to a long and fruitful partnership with the organisation.

**Elephant Safe Storage Granaries – Felumbus**

In 2014 the programme has continued to support the building of the felumbus and there is now a total of 16 felumbus in Chiawa. CLZ secured independent funding for felumbus through a 'sponsor a felumbu scheme' very kindly run by [Chiawa Camp](#) and [Old Mondoro Bush Camp](#), offering their guests the opportunity to sponsor their own felumbu (each felumbu is numbered and allocated to a donor), as well as an appeal in our newsletter, we now have funding for 24 more felumbus, in addition to the 30 pledged by Awely, means that our only barrier to construction is manpower. Stephen continues to supervise the construction of these felumbus and hopes to see even more constructed in 2015.



*Felumbu in Mushonghanende village*



## Human-Wildlife Conflict Village Scout patrols in Chiawa GMA



2014 was an important year in the progression of CLZ's Village Scout programme, moving into their role in supporting HWC in Chiawa. Thanks to funding from the [International Elephant Foundation](#), CLZ were able to place a team in the Chiawa GMA full time between December and April 2014 (peak HWC season), with a ten-day patrol per month throughout the rest of the year. The VS team was divided into two, with one officer (and one ZAWA WPO) station in Gota Gota area (on the Kafue River), and three officers (plus one ZAWA WPO) stationed at Cultural Village in Mugurameno. Tracks shown below illustrate



Patrol tracks of HWC patrols in the Chiawa GMA, April 2014

the long distances these scouts were covering on foot to attend to the 7 villages around Mugurameno. The feedback from farmers has been incredibly positive, with many claiming highest harvests for years, and improved support for the VS programme.

## Rubatano (Unity) – Community Day Event, July



Wildtracks Lodge, Chakanaka Farm and to volunteers organisation of the event.

In 2014, CLZ hosted its first Community Day in Chiawa, Rubatano ('Unity' in Goba). Camps, local businesses, schools, ZAWA, CLZ and the general community of Chiawa were invited to enter teams and compete for the winning prizes. The event was an integral means to engage and interact with the community and stakeholders of Chiawa outside of the anti-poaching and law enforcement realm which CLZ is usually associated with. Thank you to all the sponsors: [Chiawa Camp](#), [Sausage Tree and Potato Bush Camp](#), [Baines River Camp](#), [Proflight Zambia](#), Zamleather, [Kanyemba Lodge](#), [Zambia Breweries](#), Zambeef Chiawa, [Royal Zambezi Lodge](#), Kiambi Safaris, Mboma Safaris, Shaina Irwin and Sarah Diekroeger for their



## Chilli Workshop



In October this year, CLZ hosted their annual chilli workshop in Mugarameno. The workshop was focused on sharing the effects and use of chillies as a mitigation tool while providing practical demonstrations and opportunities on how to put these methods into place. This workshop was for both farmers who have already been using chillies and new farmers who had not yet used chillies so ideas could be shared on the shortcomings of the methods used and ideas on how best to overcome these were elaborated upon. It

In addition to the benefits of using chilli as a mitigation method, the workshop also focused on elephant behaviour lessons and activities carried out by CLZ's Environmental Educator, Besa Kaoma and the constructing of a solid storage for farmers' harvests, called a felumbu. Stephen Kalio and Besa Kaoma will continue to monitor and keep in contact with the participants and their fields throughout the upcoming year. 2015 will see another workshop and it hopes to continue to impart both knowledge and practical skills to the community of Chiawa to better reduce the HWC in the area.

#	Name of village	No. of participants	Men	Women	Totals
1	Chapanga	2		2	2
2	Chimusabo	6	4	2	6
3	Chiuye	1	1		1
4	Kambaje	3	1	2	3
5	Kusemwa	5	3	2	5
6	Mugurameno	6	3	3	6
7	Mushonganede	4	1	3	4
<b>Grand total</b>		<b>27</b>	<b>13</b>	<b>14</b>	<b>27</b>

## Community Support Programme Impact Assessment

CLZ also ran an initiative by Besa Kaoma, to undertake an impact assessment on the impact which CLZ's Community Support Programme has had since its inception in 2011. The results showed positive reactions to the VS HWC patrols and felumbus. Although take up of chilli fences has been low, the impact for those who have taken them up has been high, with dramatically increased yields. This shows a positive reception to the presence of Village Scouts, although demand for more scouts and more inputs for carrying out HWC, such as oil and chilli (CLZ supply used oil and provide chilli seeds annually). A summary of results of the assessment can be seen attached to this report.

### Achievements Related to Community Support Programme in 2014:

- Funding for HWC salary secured from Awely;
- Sixteen elephant-proof grain stores, 'felumbus' built;
- Over 50 farmers trained in chilli farming and HWC mitigation measures;
- First 'Rubatano' Community Sports Day held in Chiawa GMA;
- Full-time HWC patrols supported in Chiawa GMA by VS between Jan-April (12x 10 day patrols).

### 2015 Plans

- Provide HWC coordinator with motorbike for greater mobility and for quicker response rates
- Continued HWC information gathering and collation in Awely database
- Further workshops conducted to involve newly interested participants;
- Introduction pilot trials for alternative crops;
- Train VS in elephant behaviour
- Construction of further elephant safe granary stores as and when requested by households
- Introduce and trial chilli guns as a mitigation method against HWC
- Introduce and trial alternative crops less prone to HWC
- Continue training of Village Scouts and deploying into the villages to help with HWC and provide bicycles to the scouts when on HWC duty in order to enhance efficiency and response rates
- To encourage farmers to grow enough chillis that they can sell them to CLZ who can sell them to Rivonia in Lusaka. Helping locals have an additional source of income which is not vulnerable to elephant raids.

### BASE CAMP AND ADMINISTRATION

#### Staff

With CLZ's increased activities and expanding staff base in 2014, we had to increase our staff structure. CLZ now employ 37 personnel including 1 x CEO, 1 x GM, 1 x Base Camp Manager, 1 x Operations Manager (also a driver/coxswain), 1 x Environmental Educator, 1 x HWC Coordinator, 2 x Assistant Operations Manager (also a driver/coxswain), 3 drivers, 2 chefs (one is also a coxswain), 2 room attendants, 2 gardeners and 20 Village Scouts.

The operations team continue to work long hours in difficult conditions and challenges faced by managing patrol teams and Village Scouts. Rabson Tembo (Ops Manager) and Peter Tembo (Assistant) run the VS programme's administration and deployment with oversight from CEO Ian Stevenson. With the expansion of operations to Kalefu airstrip in 2015, it has been necessary to expand the team to allow for one member to be based full time in the East of the Park, with the other at CLZ and with room to allow them time off. We are pleased to welcome Justin Gumbula, who has been a reliable member of the kitchen team for the last two years, and will begin in operations in 2015. With the increasing demands on administration, stores and day to day running of camp, we also welcomed Shaina Irwin to the team in October 2014 as Base Camp Manager. Shaina, who was born and grew up in Lusaka, has an MSc in Learning for Sustainability and will provide valuable technical inputs to the EEP Programme as well as running CLZ Base camp day to day. Interviews were also held in November 2014 to bring two female staff into the team. In January 2015, Rozina Chimedza and Martha Mayenga, both from Chiawa GMA, will join the team as staff chef (new position) and chef (to replace Collins Kapesa, outgoing staff member) respectively.

### Base Camp

Time, effort and funds were invested in CLZ Base Camp in 2014. In addition to routine repairs and maintenance, CLZ were able to procure a new Toyota Land Cruiser with funds from USFWS for law enforcement. CLZ extended the staff quarters with an additional three rooms and Rabson's accommodation, with ensuite, was extended by one room to accommodate our EE manager. In addition the construction is near completion of a new manager's house (with room for two managers) which is expected to finish construction in Q1 2015.

### Accommodation

Base Camp was busy with visitors throughout 2014 including school groups, training groups, safari exams, ZAWA and community meetings, donors, members, camps managers on rest days, government authorities, volunteers and family and friends. The 1,363 bed-nights in 2014 generated over \$21,000 in revenue.

Month	ZAWA	C R B	Oth er GRZ	Profligh t	Members	Researchers	CLZ Volunteers	CLZ Staff Family & Friends (inc lodge staff)	Other (inc LZSG, private school s)	School Visits (with CLZ partner schools)	School Visits (private )	Monthl y Total
January	0	0	0	0	0	0	0	0	0	0	0	0
February	0	0	0	0	0	0	0	0	0	0	0	0
March	0	0	0	0	0	0	0	24	148	0	0	172
April	0	0	0	6	0	0	0	0	2	0	0	8
May	0	0	0	17	1	0	16	46	16	81	0	177
June	5	0	0	6	0	0	20	5	24	84	20	164
July	0	0	0	10	0	0	56	0	9	168	0	243
August	1	0	0	6	0	0	1	0	104	0	51	163
Septemb er	0	0	2	8	0	0	16	0	24	81	0	131
October	5	0	0	6	0	0	14	10	28	84	0	147
Novembe r	20	0	0	7	3	0	0	9	35	0	0	74
Decembe r	15	0	12	0	0	0	0	15	42	0	0	84
Total	46	0	14	66	4	0	123	109	432	498	71	1363

### Training

CLZ invested in the following staff training over 2014:

- Advanced Tactical Training for 20 Village Scouts
- Dominic Mwanza – Vehicle driving course
- Chilli farming and HWC mitigation technique training – 2 community workshops
- Advanced First Aid Course – Peter Tembo
- Safari Guides training - Dominic Mwanza
- Ran SMART Training by Panthera – CLZ Operations Staff (x2), ZAWA Chirundu officers (x 3) ZAWA Chilanga officers (x 2), Gorongosa RP staff (x 3), West Lungu NP (x1)
- Chefs training at Chongwe House – Emmanuel Mumba
- Teachers training (by volunteers) – Besa Kaoma
- Visit to Gorongosa Restoration Project, Mozambique – ZAWA Warden Solomon Chidunuka, Rabson Tembo and Ian Stevenson
- Chilli fence trial, February 2014 with 20 + members of the Chiawa community



**Stakeholder Participation**

CLZ works very closely on a daily basis with ZAWA in Chirundu, especially the Senior Area Warden (Solomon Chidunuka was succeeded by Mr Moses Kaoma in October 2014), and Operations Ranger, Shadreck Sulimesi, of the Lower Zambezi Area Management Unit, and the Chinyunyu Ranger, Mr Winford Puta and new Luangwa Warden, Harry Phiri as well as the Chiawa Community Resource Board. The local counsellor, Mr. Soda Nyatsanga is consulted on local community issues as well as HRH Chieftainess Chiyaba.

In 2014 CLZ has partnered with other stakeholders including the Forestry and Fisheries Department, the Veterinary Department and the University of Zambia.

**Safari Guides Training**

CLZ once again hosted and facilitated the 2014 safari guides training and examining in conjunction with ZAWA and the Lower Zambezi Safari Guide Examining Committee. The exam standard continues to rise, as does the reputation of the guiding level in the Lower Zambezi. In 2014, 89 candidates undertook the various training and exam disciplines. See table below for 2014 results.

Exam	General	Walking	Canoeing	Boating and Fishing
Sat	23	10	7	19
Passed	15	5	6	17

**Summary of main achievement in 2014 related to Base Camp and Administration**

- Staff compliment grow to 6 managers, 11 camp staff and 20 Village Scouts
- Procured a new Land Cruiser pick-up for law enforcement and management
- CLZ had visitors accounting for 1,363 bed-nights at base camp
- 89 Candidates went through Safari Guides training and exams
- Staff quarters extended by 3 rooms, additional managers room and construction of managers house

## CLZ Board and Donors

### CLZ Board

The CLZ Annual General Meeting was held on 29 April 2014 and the following individuals were elected on the board after a vote in accordance with the CLZ constitution:

Chairman: Riccardo Garbaccio, Kanyemba Lodge, Lower Zambezi, Zambia

Vice-chairman: Timothy Mushibwe, Chairman of TCZ, Zambia

Treasurer: Alan Harkness, Lusaka, Zambia

Secretary: Sarah Davies, Game Rangers International

Ian Stevenson, Chief Executive Officer, CLZ, Zambia

Anita Balletto, Sanctuary Retreats, Lusaka, Zambia

Grant Cumings, Chiawa Camp and Old Mondoro, Lower Zambezi, Zambia

Charles Davy, CPD Investments, Lusaka, Zambia

Timothy Featherby, Baines River Camp, Lower Zambezi, Zambia

Christian Liebenberg, Chongwe Safaris, Lower Zambezi, Zambia

Jason Mott, Sausage Tree Camp, Lower Zambezi, Zambia

Hassan Sachedina, Biocarbon Partners

Juri van Zyl, Lusaka, Zambia

### CLZ Management Team:

Ian Stevenson, Chief Executive Officer,

Eleanor Harvie, General Manager,

Rabson Tembo, Operations Manager,

Besa Kaoma, Environmental Educator,

Peter Tembo, Assistant Operations Manager

Shaina Irwin, Base Camp Manager (Started October 2014)

### 2014 Major Donors (In alphabetical order)

- African Management Services Company
- African Wildlife Foundation
- Awely
- Beit Trust
- Buya Bamba
- Captain Planet Foundation
- 'The Charge' boxing match (through Shaun Davy)
- Conservation Lower Zambezi members (Platinum: Anabezi Camp, Baines River Camp, Chiawa Camp, Chongwe River Safaris, Mwambashi River Lodge, Sausage Tree Camp, Old Mondoro Bush Camp, Royal Zambezi Lodge; Gold: Chongwe River House, Kasaka River Lodge; Silver: Kanyemba Lodge, Mvu Lodge; Corporate: Buya Bamba, Corpads, Eureka Campsite, Stevenson family, Terra Nova Farms
- Cynthia Tuthill, USA
- Elephant Charge, Zambia
- Expert Africa, Zambia
- Farm Pride
- Gerry Carbin, Chakanaka Farms
- International Elephant Foundation
- The Kanshanshi Foundation

- Proflight
- Rufford Foundation
- Sidecole, Switzerland
- Southern Sun Ridgeway
- Tony and Sally Squibb
- Tusk Trust, United Kingdom
- US Fish and Wildlife Service
- Wildtracks Lodge (Valley Classic Fishing Competition)
- Zambeef Chiawa



## Income Statement 2014

CONSERVATION LOWER JAMBUZI			
SUMMARIZED INCOME STATEMENT FOR THE YEAR ENDED 31 ST DECEMBER 2014			
		2014 2014	2013 2013
REVENUE	£	3,365,214	3,176,240
OTHER INCOME		-	-
TOTAL INCOME		3,365,214	3,176,240
LESS COST OF SALES	£	(176,240)	(176,240)
GROSS PROFIT		3,188,974	3,000,000
LESS OPERATIONAL EXPENSES		(242,176)	(211,187)
EXCESS OVER LOSS		2,946,798	2,788,813
LESS TAXATION (PROFIT AT RATES 14%)		(412,552)	(390,434)
TAXATION		-	-
NET OPERATING PROFIT (LOSS) 14%		2,534,246	2,398,379
PROFIT (LOSS) BEFORE TAXATION		2,534,246	2,398,379
PROFIT (LOSS) AT TAXATION RATES		2,534,246	2,398,379

[illegible]





## Appendix 1: Results of Community Support Sample Impact Assessment

	8	7	6	5	4	3	2	1	
	10/12/14	10/12/14	10/12/14	10/12/14	10/12/14	10/12/14	10/12/14	10/12/14	Date
	Ireen Kapesa	Viness Kalidza	Howard Chonzi	Sherry Mayumba	Stonjiwe Maliyapera	Friday Kalenga	Chitauka	Falesi Kumwamwasa	Name
	Mugarameno	Mugarameno	Chimsambo	Mugarameno	Kusumwa	Kusumwa	Kusumwa	Kusumwa	Village
									Farmer
									Crop/s
	Maize, sorghum	Maize	Maize	Maize, groundnuts	Maize, groundnuts	Maize, beans, groundnuts	Maize	Maize	Attended Chilli Workshop
									Plants chillis/chilli fence
									Has had a felumbu built
									You been involved with CLZ?
	1-2 years	Less than one month	over 2 years	over 2 years	1-2 years	Less than one month	1-2 years	1-2 years	Overall experience with CLZ
	Good/satisfying	Good/satisfying	Excellent/very satisfying	Good/satisfying	Excellent/very satisfying	Excellent/very satisfying	Excellent/very satisfying	Excellent/very satisfying	
Scouts have worked hard	Scouts have performed very well in protecting our crops by chasing elephants from raiding	change has been there because farmers have harvested enough crops	they have done a very good job indeed	liked the way they did it last year	doing a very good job	we would like them to do day and night	I have harvested because of CLZ chilli fence	they did it last year, we would like them to do even more next year	Comments
	we can have enough sleep and protect our crops using chilli and scouts	we have enough sleep and protect our crops using chilli and scouts	haven't had any debts since the scouts		at least we are able harvest	we can now eat our own food which we have harvested	elephants became less, bigger harvest	we are now able to harvest at least some few bags of maize	Village Scouts What has changed since CLZ started assisting you?
Difficult to harvest enough food to feed our families regularly - 3-5 months						too much, we wish they could be around through and through	Very well communicative, sometimes time and transport challenges	We feel comfortable to plant crops now.	Impact - village scouts average crop harvest before CLZ
		it was very difficult. The harvest was not there.	nothing	lost all my crops before last year	harvested before village scouts	wasn't farming before	wasn't farming before	nothing	Average crop harvest after CLZ
		we have harvested enough crops for the first time in my farming life because of the	10 x 50kgs	I filled my bags but cannot count	50 x 50kgs	17 x 50 kgs	2.2 tonnes	250kgs of maize	HWC before CLZ
big difference during and after farming season. Scouts should stop drinking beer when on duty.			Reduction in crop raids	Elephants are always there, crop damage has reduced	everyday	At least reduced in numbers when scouts came	vandalised crops	everyday	HWC after CLZ
		Bring the field scouts to start from November till April. Scouts must stop drinking beer when deployed for HWC duties.	Try help with used oil so we can use for chilli fences and elephant dung. Increase village scouts	Continue the way they were doing last year - and more	Continue what they did last year and do more	Have them through and through	Scouts should permanently build tents in each village. find a way to prevent hippos	Increase in manpower - 2 scouts per village can help	Suggested Improvements

12	11	10	9
10/12/14	10/12/14	10/12/14	10/12/14
Elliott Chimedza	Clement Kapesa	Chris Shumba	Wisdom Shawa
Chinsambo	Mugarameno	Mugarameno	Mugarameno
maize		Maize, sorghum	vegetables
over 2 years	6 months - 1 year	over 2 years	Less than one month
Good/satisfying	Poor/unsatisfying	Excellent/very satisfying	Good/satisfying
terms of farming, want more chilli to subsidise	but the number of scouts is not enough	how to protect ourselves from the animals	
able to sleep in our homes now		last year they worked well to stop HWC	they are good
very big change in terms of farming life	communicator between the community and CLZ.	animals no longer destroy our crops like they did before	
Failing to harvest crops due to rainfall	Very poor	Very poor	Poor
failing to harvest crops due to rainfall	much better	much better	still poor
elephants continue coming	very often	every month	everyday
worse off	there has been no change	2 or 3 times in a week	2 times in a day
			dedicated scouts. Scouts should serve the community not the park.
We would like CLZ to help us with chilli growing - chilli field fences	Number of scouts should increase and should be available all the time	Number of scouts should increase and beer drinking amongst scouts should reduce	

	Very Positive
	Positive
	Negative/Room for Improvement
	Very Negative
	Neutral/unknown